

Werner Enterprises enhances employee convenience at onsite cafeteria with Cashless Payment option

Global transportation provider implements ARBAPRO Café Point of Sale System by ARBA Retail Systems, with Employee Payroll Deductions.

SNAPSHOT

Opportunity: Improve employee convenience at the employee cafeteria, while tightening financial control.

Solution: Implement ARBAPRO Café POS Inventory Control System by ARBA Retail Systems, with customized employee payroll deductions as a cashless payment option.

Key Results: Employees are now able to make cafeteria purchases by simply swiping the badge they carry, a much faster and more convenient alternate to cash.

Werner Enterprises, a premier transportation and logistics company; was looking for a Point of Sale system which would allow employees to make cash and cashless purchases of food and beverages in the company cafeteria. Enhanced convenience for Werner employees was an important benefit the new system needed to provide; as well as improved financial accountability for informed decision making, and increased revenue and cost control.

New Point of Sale System

Werner Enterprises replaced their existing cash registers with all-in-one touch screen terminals running ARBAPRO Café POS software with employee payroll deductions by ARBA Retail Systems. The touch screen technology enables fast throughput at the cafeteria checkout points, and ensures that food and beverage items are sold at the correct price.

Menus screens were tailored to present the cafeteria's menus; and scheduled to rotate from breakfast to lunch, and through each day of the week. To ring up food and beverage purchases, the cashiers touch the appropriate button or icon on the menu screen display, which is tied to an inventory item with PLU number and price.

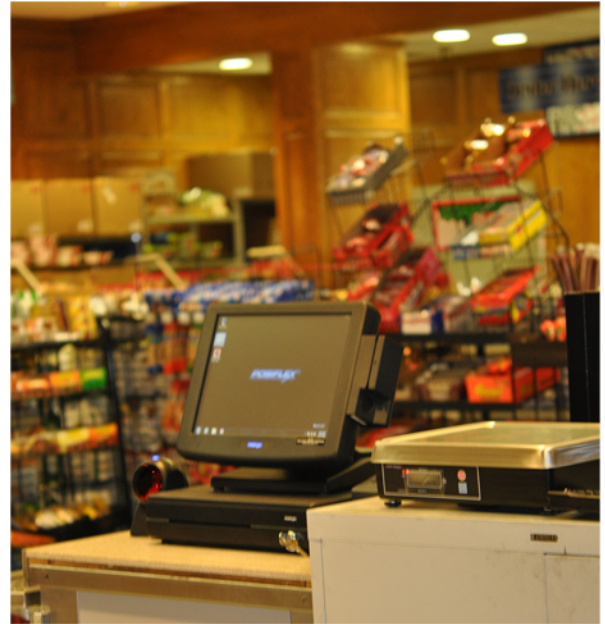
Food items sold by weight are placed on an integrated electronic scale, with calculated totals automatically sent to the POS system. The cafeteria also sells a wide variety of bar coded convenience items, which are captured in inventory and scanned at the point of sale for further speed and price accuracy.



Werner Enterprises enhances employee convenience at onsite cafeteria with Cashless Payment option

Payroll Deduction Transactions

Werner Enterprises required a system that would allow office associates and drivers to pay for their cafeteria purchases by scanning their employee badge for automatic deductions from future paychecks. To accomplish this, ARBAPRO software was customized to interact with Werner's POS web services for authentication, credit availability inquiries, and payroll deduction transactions. "Payroll deductions have already played a significant role in increasing cafeteria sales since the system went live", says Jodi Winther, Senior Accountant at Werner. "We are very pleased with the amount of payroll deduction transactions now being done. Payroll deductions have increased cafeteria sales by 25%."



ARBA software products are developed on the Microsoft .NET SQL solution framework with a POS database running SQL 2008 and Windows 7 operating system. This open system environment provided the flexibility to tailor the solution to interface with mainstream applications according to Werner's requirements.

Financial Control and Reporting

ARBAPRO Café provides the Werner management team with a suite of sales and financial reports for informed financial decisions. They now have visibility into how food and beverage items are performing, and are beginning to record and track food costs for informed re-pricing decisions based on profit or loss margins. To further protect margins, low margin food and beverage items may be flagged as non-discountable, making them automatically ineligible for discounts.

Werner rewards their employees with many different types of coupons for redemption at the company cafeteria; including new employee free lunch coupons, HR wellness rewards, and safe driver rewards. Tracking coupons as they're redeemed is an important system feature they use for financial tracking, and associating the appropriate cost with the issuing company department.

WERNER

About Werner Enterprises, Inc.

Werner Enterprises, Inc. was founded in 1956 and is a premier transportation and logistics company, with coverage throughout North America, Asia, Europe, South America, Africa and Australia. Werner maintains its global headquarters in Omaha, Nebraska and maintains offices in the United States, Canada, Mexico, China and Australia. Werner is among the five largest truckload carriers in the United States, with a diversified portfolio of transportation services that includes dedicated; medium-to-long-haul, regional and local van; expedited, temperature-controlled; and flatbed services. For more information, visit <http://www.werner.com>.



About ARBA Retail Systems

Headquartered in Naperville, Illinois, ARBA Retail Systems is a national provider of Point of Sale and Inventory Management systems to the retail, corporate, and healthcare industries. For more information, visit www.arbapro.com.